



# Newsletter

Hello my amazing 4th grade families! We have made it through the first week! I just want to take a second and praise your kids for all the hard work they have put in! I know getting a new teacher with a whole new way of doing things and a new set of rules is an adjustment and they have all handled it so well!

Just a reminder to please feel free to reach out to me at any time with any questions or concerns either via email: [Natalie.hart@gobethany.com](mailto:Natalie.hart@gobethany.com) or you can call the school 707-451-6683 ext. 24 to reach our classroom.

## Important Upcoming Dates

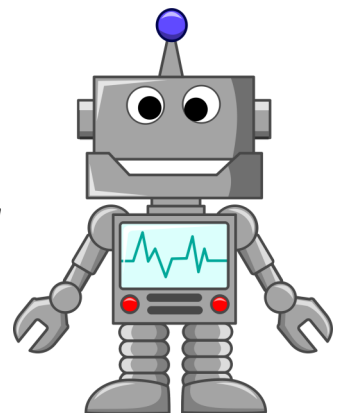


**Thursday 3/9:** Field Trip to VPAT for the Wizard of Oz

*Please wear your Bethany Spirit shirt and school pants/skorts*

**Tuesday 3/14:** Maker Lab Studio at Solano Community College

**\*\*Students will need to bring their lunches with us (please nothing that needs to be heated)\*\***





final	silver
finish	capture
narrow	cabin
shelter	dinner
ahead	minus
corner	minute
divide	value
famous	reward
recent	broken
hollow	dentist



## Vocabulary

politics  
intelligent  
disorderly  
approve  
polls  
legislature  
amendment  
candidates  
informed  
denied

## ELA

This week we will be learning about negatives, syllable patterns, adages and proverbs, and elaboration

## Math

I have noticed this week that my friends need some extra help with multiplication as we are doing our division problems. So we will be taking a break from the math book at times to do extra practice to really get our multiplication tables 0-12 down. We can't build a house without a firm foundation :)

## Science

This week we will be learning about the phases of the moon.  
We will be doing an experiment using Oreo Cookies

