

# Second Grade News From Mrs. Ledford!!!!

Please feel free to contact me with any questions or concerns. You can email me at [amy.ledford@gobethany.com](mailto:amy.ledford@gobethany.com) or call the school and leave a message. The school phone number is

451-6683 and my extension is #21.

## **Important Dates**

October 12<sup>th</sup> - No School

October 14<sup>th</sup> - Make-up Picture Day

October 21<sup>st</sup> - Apple Pie Sale (all money/checks are due)

October 28<sup>th</sup>, 29<sup>th</sup>, and 30<sup>th</sup> - Half Days (school out at noon)

## **PE and Music**

Second grade will be having PE with me at this time. Tuesday will be our PE day at this time. They can wear their PE clothes on this day. We will have some scheduled Music time with Pastor Pledger this school year. Our time for Music is from 1:00 to 1:50 on Wednesdays.

## **Homework and Reading Logs**

A homework packet will go home each Friday in their "Friday Folders" and it needs to be returned the following Friday. Homework is to reinforce what we are learning or have already learned in class. It teaches responsibility and the development of good study habits. In the homework packet is a reading log. I encourage your student to read 20 minutes each school night. I know at times this can be difficult, so if your student reads on the weekend that can be recorded for a day that might be missed during the week. Thanks for your cooperation!

\*Please let me know if your student seems to be struggling with any of the assignments in the packet or if the packet has too much work!

## **Snack**

Please send your student to school with a nutritious snack. Our fist snack is in the morning and it helps keep them going until lunch. Things like yogurt, fruit, cheese, crackers and granola bars are good things for first snack.

## Labels


Please label things your student brings to school, especially their chapel sweaters. Thanks!

Shoes - Your student only needs to wear chapel shoes on chapel days!


Chapel - We are having Chapel! We are watching through Zoom in our classrooms. Your student should be dressed in Chapel clothing on Wednesdays. Thanks!

Consumable Supply List - Last names A - L ( a 1 time donation between now and 12-18-20)

- I don't need drinking cups! I have a lot. **We can always use more wipes or Lysol spray if anyone can find it!** Thank you for helping us stay clean and healthy! Any extra donatians after this can go towards partnership hours.



### 2020-2021 CONSUMABLE CLASS SUPPLY REQUEST

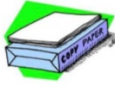


Each year we request that our Bethany families provide various consumable supplies for use in their student's classroom\*. This is completely separate from Partnership Hour Item Donations. We are asking families to provide supplies alphabetically by last name as designated below. Please provide the requested items to each classroom at the **BEGINNING** of the semester. Each teacher will record that they have been received. Following is the alphabetical list by semester:

"A—L"	1 <sup>st</sup> Semester:	August 13, 2020 to December 18, 2020
"M—Z"	3 <sup>rd</sup> Semester:	January 4, 2021 — June 1, 2021

Each family is asked to provide the following supplies for **each** child's classroom:

- 2 Rolls of Paper Towels
- 2 Box of Small Drinking Cups (3 oz. size)
- 3 Reams White Copy Paper
- 2 Box of Kleenex-type facial tissues, non-lotioned
- 1 Container Clorox Disinfecting Wipes
- 1 Bottle of Hand Sanitizer



*PLEASE NOTE: Items requested above may be changes and/or quantities updated by semester.*

**We sincerely appreciate each family's assistance!**

**Please print family's last name clearly on the bag and  
PLEASE DROP OFF IN THE OFFICE.**

\* Items purchased for the classroom are considered a donation, and your receipt can be kept for tax filing purposes.

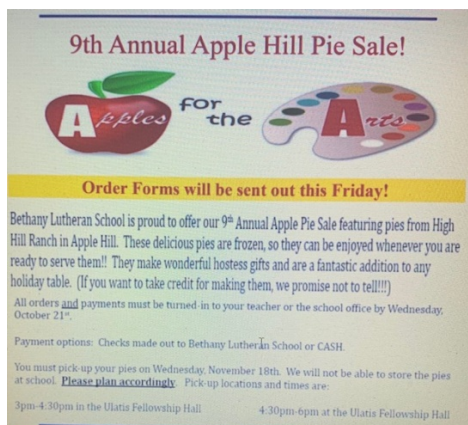
**Weekly News** - Please make sure you read the weekly Eagle that Paula sends out. It is filled with lots of information. Please let me know if you aren't receiving it. Thanks!

**Bethany Facebook** - Bethany has a Facebook page. If you would like to join, go to Bethany PVC and ask to join. It's a private group.

**Classroom Donations** - I have already purchased some balls and jump ropes for 2<sup>nd</sup> grade use only. We are not sharing our recess equipment! If any parents would like to donate more outdoor stuff, I would greatly appreciate it. We could use new jump ropes, frisbees, or anything fun for outdoor use. Thanks so much!!! This can count for partnership hours!!!

**End of the day** - Thanks everyone for doing a great job at pick up time. I will walk the class to the number 2 (near the map) and dismiss the students from there.

**Apples for the Arts** - Yummy Apple Hill pies for sale!



**End of the Quarter and Conferences** - The first quarter ends on Friday, October 9<sup>th</sup>. Parent - teacher conferences are not until the end of the month. They will take place on Wednesday, October 28<sup>th</sup> and Thursday, October 29<sup>th</sup>. School gets out at noon on these days. Conferences will be in person and outside (hopefully it's not raining) or you can also choose to have a Zoom online conference. I will bring a clipboard outside at pick up time for sign-ups. Please try to see me after school, so you can pick a time. If the days and times don't work for you, we can figure something else out. Thanks so much!

**Healthy Life Shakes** - Check the Friday Folder for a flyer about smoothies after school on Fridays.